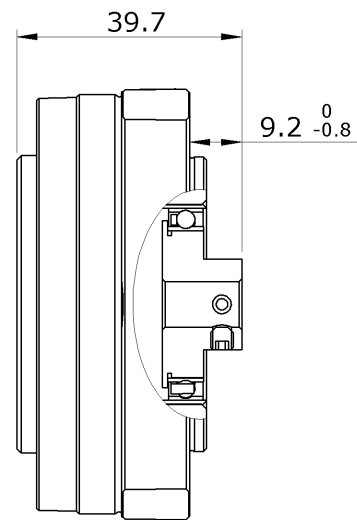
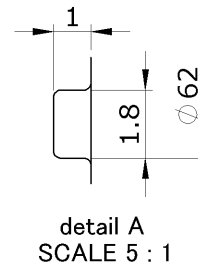
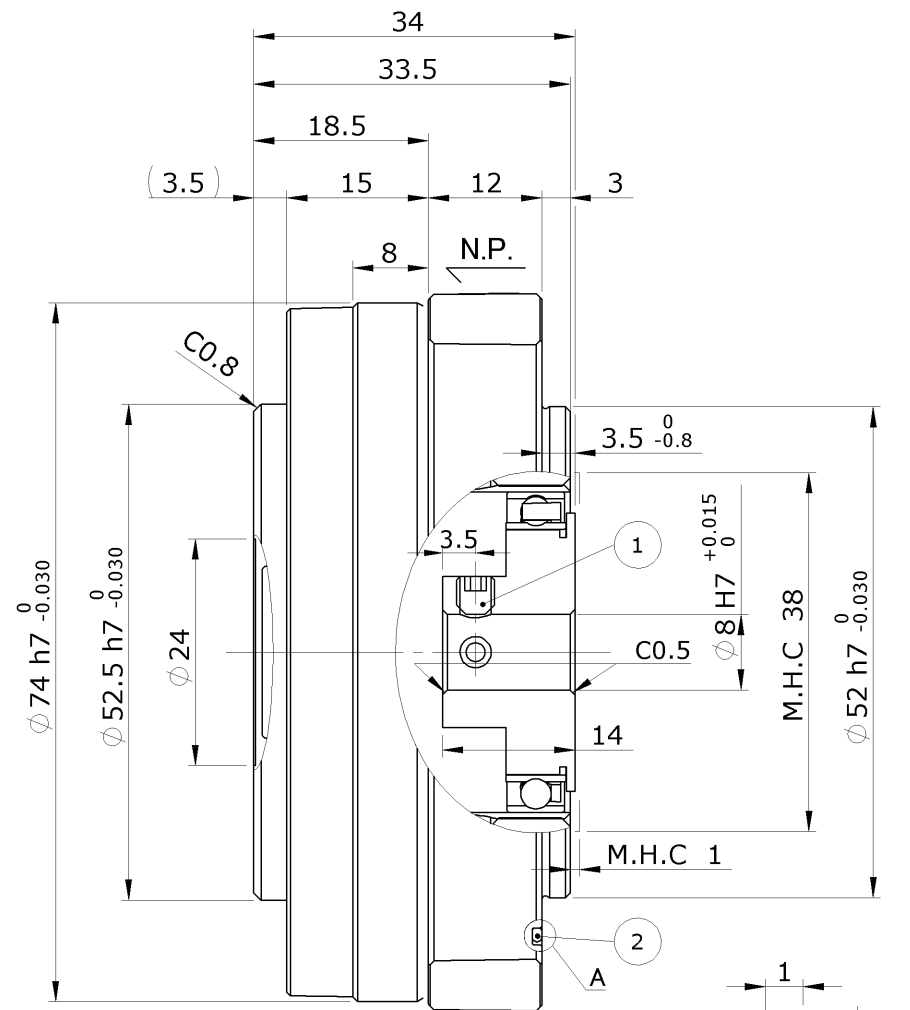
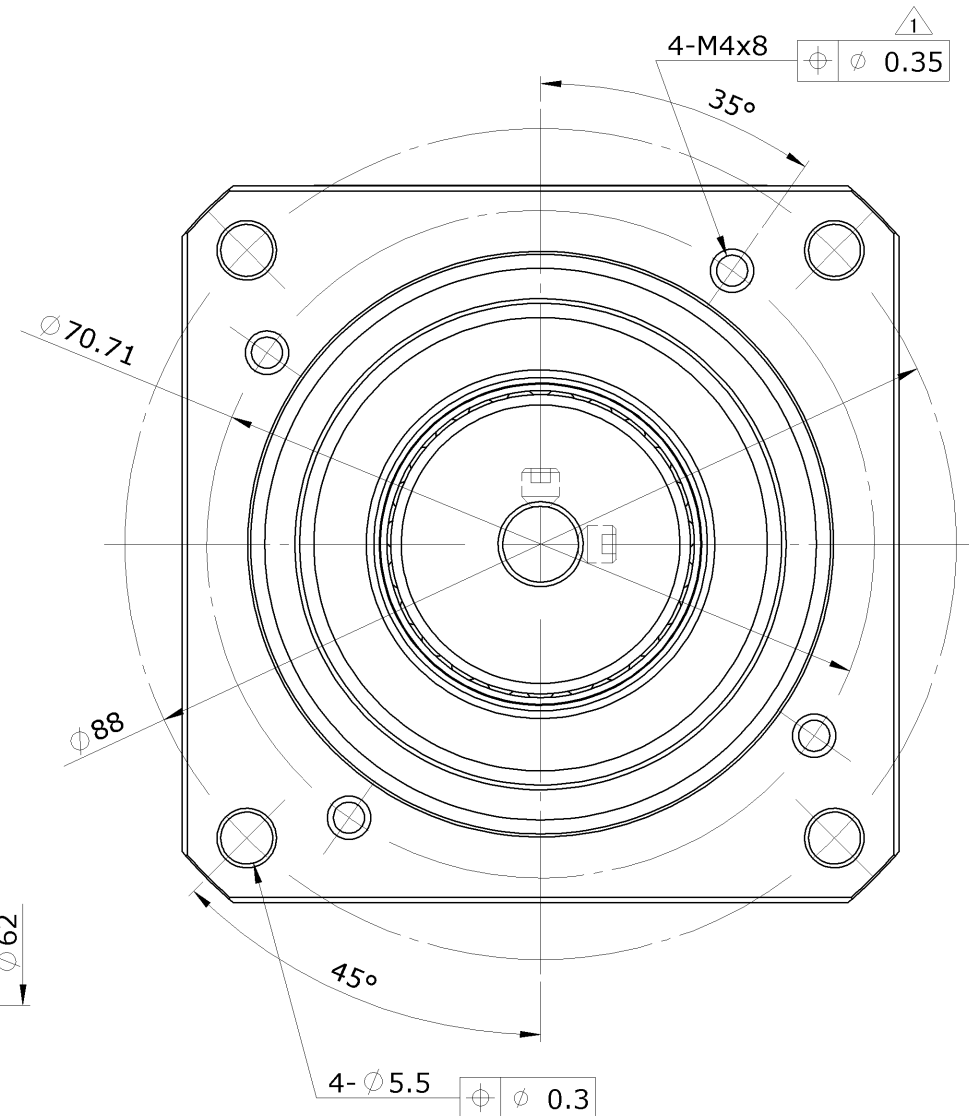


SCALE 0.75 : 1



Dimension of interface at counter-assembly

スケール 0.75 : 1



ITEM NO.	Parts	型式(TYPE)	QTY.	Note
1	Set Screw	M4x4	2	
2	O-ring	φ58.4X1.3	1	Enclosed in the box

REMARKS

- Lubrication : HarmonicDrive®Gear HarmonicGrease® SK-2
Cross Roller Bearing HarmonicGrease® SK-2
- M.H.C = MINIMUM HOUSING CLEARANCE
- Designing and/or Handling of HarmonicDrive®Gears(HarmonicDrive® Actuators) has to Comply with technical information shown in HarmonicDrive® Catalog .

訂正 REV 1 来歴 DESCRIPTION Changed Positional Tolerancing.

仕様 SPEC (標準)

機械加工無記号公差	0	0.5	6	30	120	315	1000
GENERAL TOLERANCE	±0.05	±0.1	±0.2	±0.3	±0.5	±0.8	±1.2

備考 : 特記無き角はC0.2以下、すみの丸みはR0.4以下
REMARKS CHAMFER UNSPECIFIED SHARP CORNERS 0.25 / ALL UNSPECIFIED RADLL TO BE 0.5 MAX
無記号表面アラサ 50S 25S 6.3S
SURFACES MARKED EXCEPT AS NOTED

尺度 SCALE 1.25:1
DWG SIZE A3
UNIT mm
THIRD ANG

設計 DESIGN N.Tanioka Apr-22-'15
検図 VRFD E.Kidooka Apr-22-'15
承認 APPD H.Tsukahara Apr-22-'15

タイトル TITLE ASSEMBLY DRAWING

製品名 ARTICLE CSF-14-100-2UP



図番 DWG No C2A7785

— A

PROPRIETORSHIP This drawing (document) is the PROPERTY of Harmonic Drive Systems, Inc. and shall not be traced, otherwise copied or used for purposes other than agreed upon, nor communicated to any third party without written permission of Harmonic Drive Systems, Inc.

Registered Trademark in Japan.