

Rating Table

1. Reduction Ratio	50
2. Rated Torque at 2000 r/min	5.4 Nm
3. Limit for Repeated Peak Torque	18 Nm
4. Limit for Average Torque	6.9 Nm
5. Limit for Momentary Peak Torque	35 Nm
6. Max. Input Speed r/min	8500 r/min
7. Limit for Average Input Speed r/min	3500 r/min

Performance Data for the Output Bearing

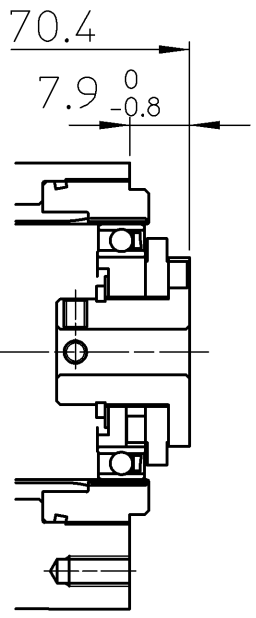
Pitch circle dia. of a roller	Offset amount	Basic Dynamic Rated Load C	Basic Static Rated Load Co	Allowable Moment Load Mc	Moment Stiffness Km	Permissible Dynamic Radial Load Fr	Permissible Dynamic Axial Load Fa
35 mm	11.4 mm	61.2×10 ² N	58.5×10 ² N	13.2 Nm	1.34×10 ⁴ Nm/rad	550 N	1800 N

REMARKS

- Lubrication : Harmonic Drive® Gear HarmonicGrease® SK-2
Output Bearing Multemp HL-D
- Please remark that there is no position relationship between 6-M4X6 and keyway.
Designing and/or Handling of Harmonic Drive® Gears(Harmonic Drive® Actuators)
has to Comply with technical information shown in Harmonic Drive® Catalog Registered Trademarks in Japan.

PROPRIETORSHIP
This drawing (document) is the **PROPERTY** of Harmonic Drive Systems, Inc. and shall not be traced, otherwise copied or used for purposes other than agreed upon, nor communicated to any third party without written permission of Harmonic Drive Systems, Inc.

Dimension of interface at counter-assembly



CUSTOMER DRAWING NO.

訂正 REV	来歴 DESCRIPTION	設計 DESIGN N.KOYAMA Sep-26-13	タイトル TITLE ASSEMBLY DRAWING
仕様 SPEC	(標準)	検図 VRFD E.KIDOOKA Sep-26-13	製品名 ARTICLE CSF-14-50-1U-CC
機械加工 公差 GENERAL TOLERANCE	備考 REMARKS : 特記無き角はCO. 2以下、すみの丸みはRO. 4以下 無記号表面アブラサ SURFACES MARKED EXCEPT AS NOTED	承認 APPD H.Tsukahara Sep-26-13	番 DWG No C2A5734 -
0 0.5 6 30 120 315 1000	50S 25S 6.3S	尺度 SCALE 1:1	図番 DWG No C2A5734 -
0.5 6 30 120 315 1000 2000	▽ → ▽ ▽ → ▽ ▽ → ▽	DWG SIZE A3	UNIT mm
±0.05 ±0.1 ±0.2 ±0.3 ±0.5 ±0.8 ±1.2		THIRD ANG ⊕ ⊖	
本図は (株) ハーモニック・ドライブ・システムズの所有に係わるものです。許可なく第三者に見せたり、トレースその他の複写及び指定された用途以外には使用しないで下さい。			