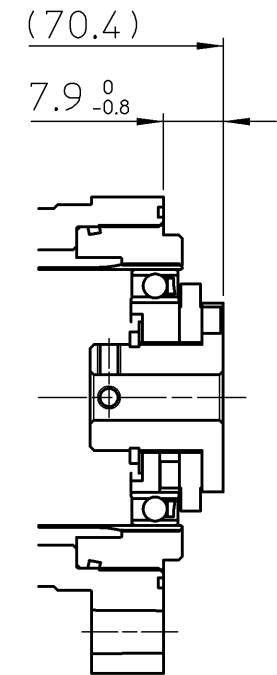


Dimension of interface at counter-assembly



Rating Table

Rated Torque (2000r/min)	Limit for Repeated Peak Torque	Limit for Average Torque	Limit for Momentary Peak Torque	Max. Input Speed	Limit for Average Input Speed
5.4 Nm	18 Nm	6.9 Nm	35 Nm	8500 r/min	3500 r/min

Performance Date for the Output Bearing

Pitch Circle	Offset	Dynamic Load Rating C	Static Load Rating Co	Permissible Dynamic Tilting Moment	Tilting Moment Stiffness	Permissible Dynamic Radial Load	Permissible Dynamic Axial Load
35 mm	11.4 mm	6.12x10 <sup>3</sup> N	5.85x10 <sup>3</sup> N	13.2 Nm	1.34x10 <sup>4</sup> Nm/rad	550 N	1800 N

REMARKS

Lubrication : Harmonic Drive Harmonic Grease SK-2  
Output Bearing Multemp HL-D

※1: Please remark that there is no position relationship between 6-M4 and keyway(Dcut).

Designing and/or Handling of Harmonic Drive Gears (Harmonic Actuators) has to Comply with technical information shown in Harmonic Drive Catalog.

ENCLOSED IN THE BOX	
O-ring	48.00x1.00

CUSTOMER DRAWING NO.

**PROPRIETORSHIP**  
This drawing (document) is the **PROPERTY** of Harmonic Drive Systems, Inc. and shall not be traced, otherwise copied or used for purposes other than agreed upon, nor communicated to any third party without written permission of Harmonic Drive Systems, Inc.

訂正 REV	来歴 DESCRIPTION	設計 DESIGN	Y.MIZUTANI	Sep- 1-10	タイトル TITLE	ASSEMBLY DRAWING
仕様 SPEC	(標準)	検図 VRFD	T.HAGIWARA	Sep- 1-10	製品名 ARTICLE	CSF-14-50-2XH-J
機械加工無記号公差 GENERAL TOLERANCE	備考 REMARKS : 特記無き角はCO. 2以下、すみの丸みはRO. 4以下 無記号表面アブラサ SURFACES MARKED EXCEPT AS NOTED	承認 APPD	J.KUROGI	Sep- 1-10	図番 DWG No	C2A2211 -
0 0.5 6 30 120 315 1000	0 0.1 0.2 0.3 0.5 0.8 1.2	尺度 SCALE	1:1	DWG SIZE	UNIT	THIRD ANG
±0.05	±0.1	A3	mm			
50S	25S	HARMONIC DRIVE SYSTEMS		INC TOKYO JAPAN		
▽ → ▽	▽ → ▽	本図は (株) ハーモニック・ドライブ・システムズの所有に係わるものです。許可なく第三者に見せたり、トレースその他の複写及び指定された用途以外には使用しないで下さい。				