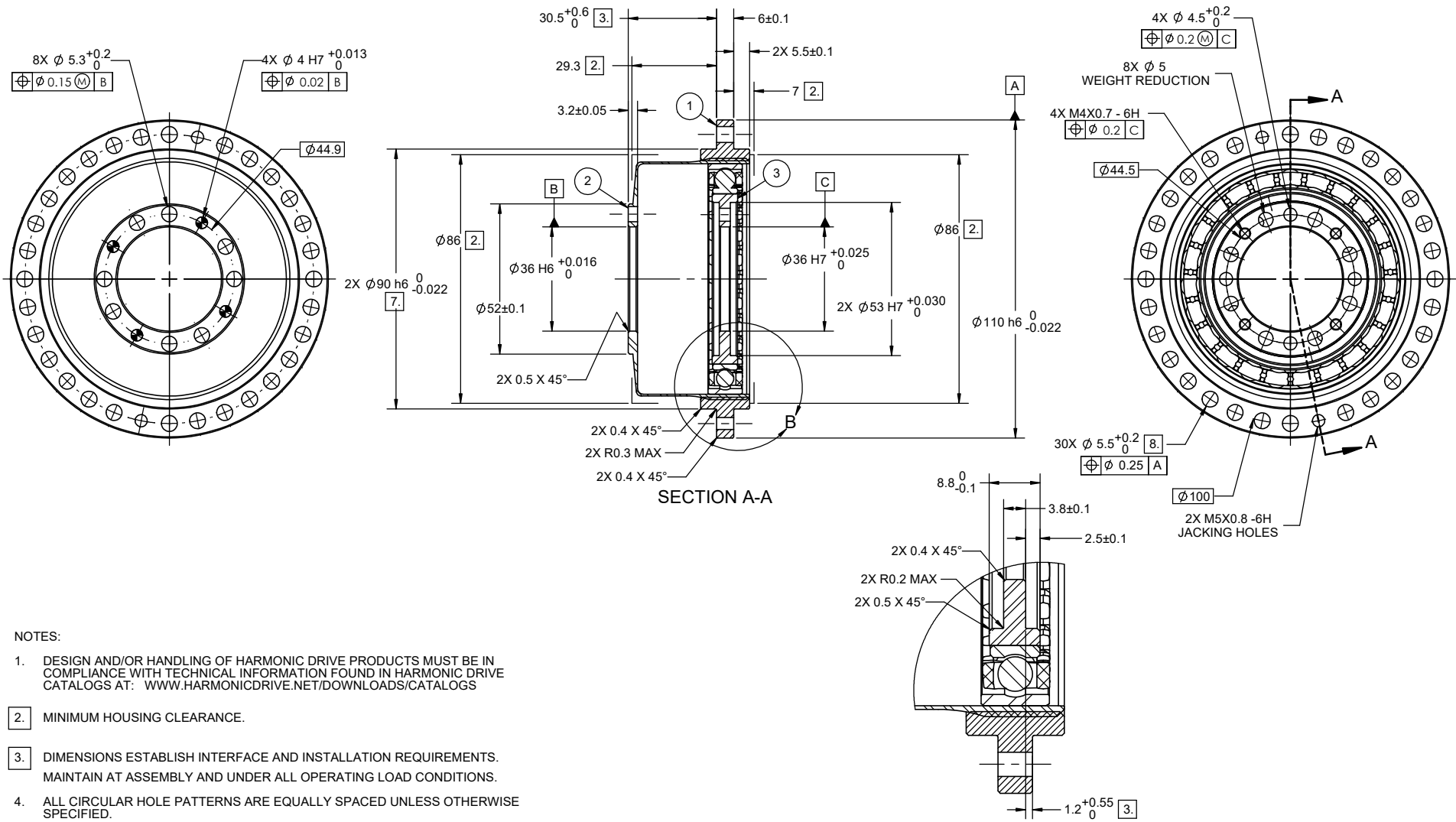


Item	Qty	PART
1	1	CIRCULAR SPLINE
2	1	FLEXSPLINE
3	1	WAVE GENERATOR ASSEMBLY

REVISIONS					
REV	DCF NO.	BY	CHKD	APPD	DATE
A	21-0292	KBouchard	RELEASED		12/10/2021



NOTES:

- DESIGN AND/OR HANDLING OF HARMONIC DRIVE PRODUCTS MUST BE IN COMPLIANCE WITH TECHNICAL INFORMATION FOUND IN HARMONIC DRIVE CATALOGS AT: WWW.HARMONICDRIVE.NET/DOWNLOADS/CATALOGS
- MINIMUM HOUSING CLEARANCE.
- DIMENSIONS ESTABLISH INTERFACE AND INSTALLATION REQUIREMENTS. MAINTAIN AT ASSEMBLY AND UNDER ALL OPERATING LOAD CONDITIONS.
- ALL CIRCULAR HOLE PATTERNS ARE EQUALLY SPACED UNLESS OTHERWISE SPECIFIED.
- MAINTAIN COMPONENTS IN "AS RECEIVED" SERIALIZED SETS.
- CONFIGURATION IS FOR GREASE LUBRICATION ONLY.
- THE CUSTOMER MATING PARTS MUST COMPENSATE FOR THE REDUCED RADIAL STIFFNESS OF THE WEIGHT REDUCED CIRCULAR SPLINE. IT IS RECOMMENDED TO PILOT THESE ITEMS ON THE $\phi 90$ h6 REGISTER DIAMETERS.
- MAXIMUM TORQUE IS LIMITED BY TRANSMISSION TORQUE OF BOLTS AND PINS:
 FLEXSPLINE: 535 Nm (IF MOUNTING WITH 8X M5 BOLTS AND 4X 4mm PINS)
 CIRCULAR SPLINE: 892 Nm (IF MOUNTING WITH 16X M5 BOLTS);
 675 Nm (IF MOUNTING WITH 12X M5 BOLTS)
- TO ORDER, USE PART NUMBER 34-032XXXBBLWUS, WHERE XXX IS THE RATIO.

PROPRIETARY AND CONFIDENTIAL
 THIS DRAWING CONTAINS VALUABLE CONFIDENTIAL AND PROPRIETARY TRADE SECRET INFORMATION OF HARMONIC DRIVE LLC. COPYING, DISCLOSING OR USING THIS INFORMATION WITHOUT THE EXPRESS WRITTEN AUTHORIZATION OF HARMONIC DRIVE LLC IS PROHIBITED.

THIS DOCUMENT WAS CREATED IN ACCORDANCE WITH ASME Y14.5-2018.

DIMENSIONS ARE IN MILLIMETERS UNLESS OTHERWISE SPECIFIED.

DRAFTER KBouchard 04/07/2021	CHECKER rberry 11/29/2021
MATL ENG. twalsh 12/03/2021	DESIGN ENG. KBouchard 11/29/2021
MFG. ENG. DRyl 12/08/2021	QUALITY amorlock 12/09/2021
SIMILAR TO	

1010906/1010976



Harmonic Drive®
 42 DUNHAM RIDGE
 BEVERLY MA 01915-1844
www.harmonicdrive.net

TITLE:
INSTALLATION DRAWING
CSG-32-XXX-2A-GR-BB-LW

SIZE C	CAGE CODE 34519	DWG. NO. 1010990	REV A
SCALE: 1:1		SHEET 1 OF 1	