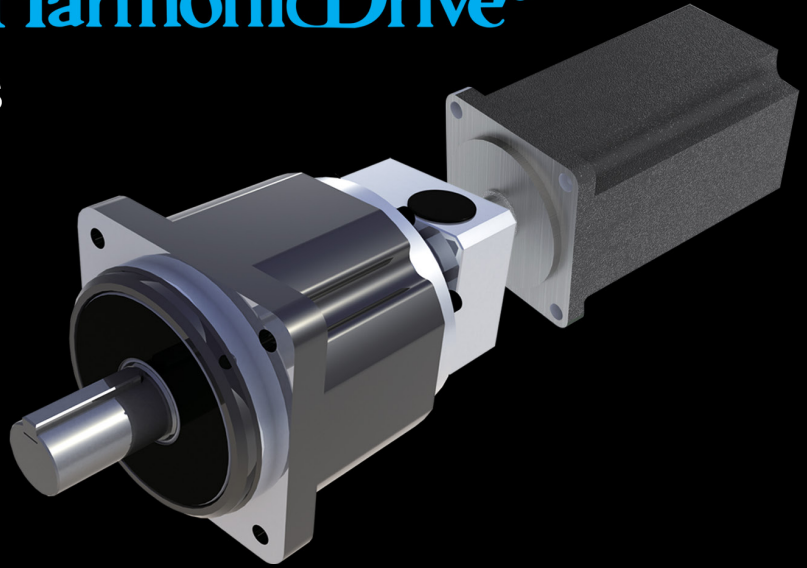
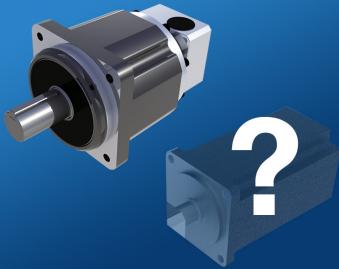


Selection Tool for HarmonicPlanetary® & HarmonicDrive® Servo Mount Gearheads

Easily connect your high performance servomotor with one of our precision gearheads.

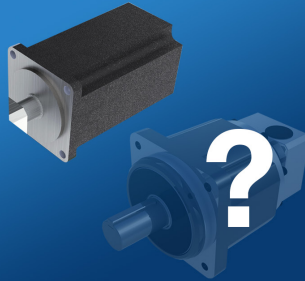


Select a Gearhead,
find a compatible Motor



Get Started

Select a Motor, find
a compatible Gearhead



Get Started

Harmonic Drive's Gearhead Selector Tool can be conveniently launched from the home page of our gearhead website, www.harmonicdrivegearhead.com, to find the correct gearhead or motor to fit your needs.

Find your Motor

Manufacturer

Kollmorgen

Series

AKM

Model

AKM41E-AN

Bus Voltage

320

Your Motor

AKM41E-AN Kollmorgen

Rated Torque: **1.82 Nm**

Peak Torque Rating: **6.28 Nm**

Max Speed: **6,000 rpm**

Inertia: **0.81 kg-cm²**

Drive System Voltage: **230 Vac**

Bus Voltage: **320 Vdc**

Harmonic Drive's Gearhead Selector Tool can be conveniently launched from the home page of our gearhead website, www.harmonicdrivegearhead.com. While registration is not mandatory to access the application, it is required to download results. It's a few short data fields (email address, company name, state, country) but well worth the ability to download solid models and dimensioned drawings.

Once in the application, the user is prompted to begin motor and gearhead selection, and not necessarily in that order. Should it be preferential to start with a motor selection, the software will provide drop down menus with manufacturer and model number options. Bus Voltage is also a part of the motor selection process as this helps define the specific speed/torque curve for which sizing calculations are based.



Quickly filter through a wide range of configurations, ratios and torque ratings to find the right product for your needs at www.harmonicdrivegearhead.com.

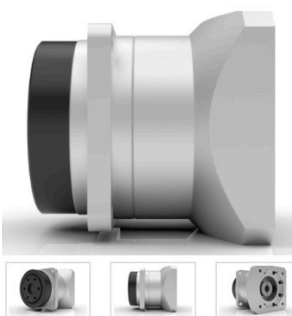
When a motor selection is finalized, the application presents a list of available gearheads suitable for that motor selection. Primarily, this list is filtered in two ways; the impact of reduction ratio on the speed/torque characteristics of the motor and the motor face dimensions as it relates to the available range of gearhead input flange sizes.

Starting with gearhead selection is also a popular method of sizing us an actuator. This option presents the entire gearhead database and allows for easy filtration by product series, torque ranges, reduction ratio, speed ranges and a host of other filterable parameters, such as, frame size, rated torque L10, backlash, backdriving torque, torsional rigidity, transmission accuracy, tilting moment stiffness, and permissible radial and axial loading.

A utility allowing gearhead product comparisons is also built into the tool. This allows users to list ratings, side by side, on a multitude of gearheads simultaneously, making ultimate product selection easier. When a motor is paired with a gearhead, the application will present cautionary notes about potential speed or torque limitation requirements on the motor due to torque amplification through the reduction ratio. The software can use either metric or imperial units of measure and resultant product configurations can be saved to pdf, printed, or emailed. Downloading of product catalogs, assembly instructions and solid models and dimensioned drawings can all be accomplished from the tool. And a chat/phone call facility is also available on the page to allow for live engagement with a sales engineer.

Compare Products Your current units are metric. [Change to english.](#)

Ordering Code	Model Series	Ratio	Rated Torque L50	Limit for Repeated Peak Torque	Limit for Momentary Peak Torque	Max. Input Speed
			Nm	Nm	Nm	rpm
Compare Products						
Sort	Sort	Sort	Sort	Sort	Sort	Sort
	Hide	Hide	Hide	Hide	Hide	Hide
Selections		3 to 13	58 to 622	5 to 1293	20 to 2824	2500 to 5455
-- Add a Column --	<input type="checkbox"/> CSF <input type="checkbox"/> HPF <input type="checkbox"/> HPG Helical <input type="checkbox"/> HPN	<input type="checkbox"/> CSG <input checked="" type="checkbox"/> HPG <input type="checkbox"/> HPGP <input type="checkbox"/> HPN-L				
Select All Select None						
<input type="checkbox"/> HPG-32A-3	HPG	03	60	225	507	3,600
<input type="checkbox"/> HPG-32A-3-U1	HPG	03	60	225	507	3,600
<input type="checkbox"/> HPG-50A-3	HPG	03	160	850	1,200	3,000
<input type="checkbox"/> HPG-50A-3-U1	HPG	03	160	850	1,200	3,000



Series	Size	Version	Ratio	Backlash	Input Bearing	Output Configuration	Motor Code
HPG	32	A	03	BL1	Z	F0	AKM4X-AN

- High Efficiency
- Low Backlash
- High load capacity output bearing
- Quick Connect® coupling

[Preliminary** PDF Drawing](#)

[Preliminary** dxf File](#)

[Solid Model](#)

**Drawing does not include modified features for mounting the selected motor.

HarmonicDrive®

42 Dunham Ridge, Beverly, MA 01915
www.harmonicdrivegearhead.com